

Pawn Game Chess

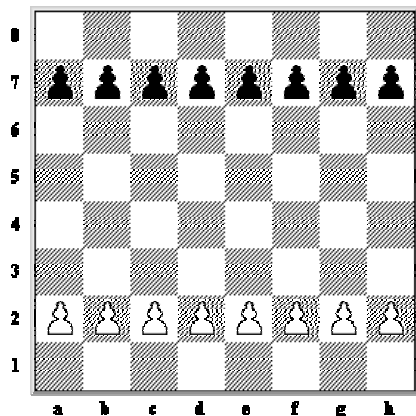
Rules

The Pawn Game. This game is very good for learning how pawns move. Remember the Pawns move one square forward (never backward) except on their first move, when they have a choice of moving either one or two squares. They capture by moving one square diagonally forward.

**AIM : To move the pawn to the last rank
(one who First moves his pawn to last rank WINS)**

The starting position

In this game Pawns are placed on the board as in normal chess but no other pieces are used. Please see Diagram below



Pawn moves as per Chess game including En Passant rule, Pawn move straight and capture diagonally. First move any of the Pawn can be one step or two steps.

How a move is completed : - A move is considered completed when you have put the pawn on a new square and release your hand.

Illegal move : - If you make a move with a pawn which is not in accordance with the rules of the game, you must retract it and make a different move with the same Pawn, provided that is legal. If it is not, you are free to make legal move with any other Pawn.

Touch to Move : - If it is your turn to play and you touch one of your Pawn, you must move the Pawn you have touched and, if you touch your opponent's Pawn, you must capture it provided there is legal move to capture.

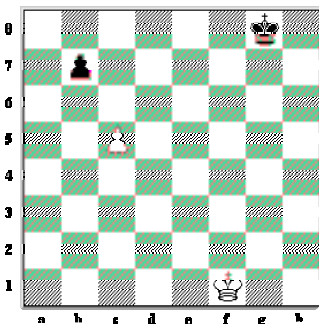
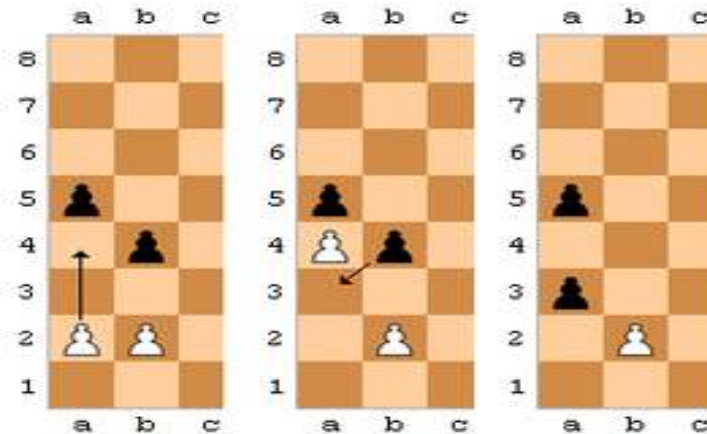
Adjust : - If you do not intend to move a pawn but merely wishes to adjust its position, you must say "I Adjust" before touching the chessmen (chess piece) to be adjusted.

Winning the game: - If one Pawn of White reaches on the 8th rank before Blacks Pawn reaches the 1st rank, *White wins the Game* or vice versa that is, If one Pawn of Black reaches on the 1st rank before Whites pawn reaches 8th rank, *Black wins the Game*.

How the game is Drawn : -

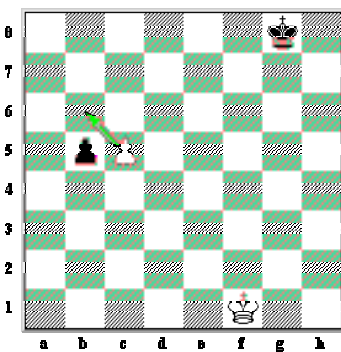
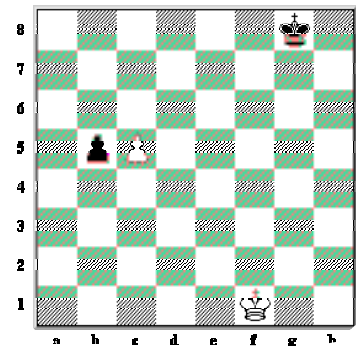
- A) If there is no legal move that can be played, game will be treated as Draw.
- B) No pawn has reached last rank and one of the players all Pawns are captured.
- C) if both sides Pawns are blocked up so that neither side can make any moves.

En Passant



Every Pawn, on its first move, has the choice of moving either one square or two squares forward.

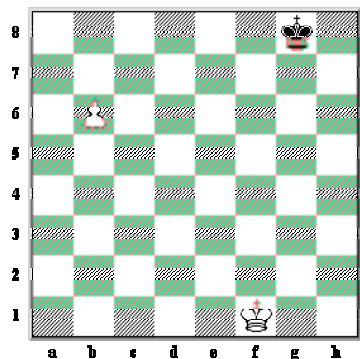
Black may think, "If I move my Pawn one square White will capture it so I'll move it two squares." and the position would be as shown in the diagram on Right side. :



However, White can still take the Black pawn as if it had moved only one square. The new position would be as shown in the diagram on Left side.

White removes the black pawn from the board and places the White pawn on the square the Black pawn would have moved to if it had only moved one square forward. See Diagram on

right side.



This special way of capturing is called capturing ***En Passant*** and is abbreviated *e.p.* *En passant* is a French expression which means "**in passing**". The *En Passant* capture must be done immediately after the black pawn advances two squares. If White plays another move he cannot then decide to capture *En Passant*!